



www.ezhometech.com
13F-1, No.189, Sec.2, Keelung Road, Taipei, Taiwan, R.O.C.
Tel: 886-2-27354224 Fax: 886-2-27354224

EZserver Quick Guide

www.ezhometech.com

Updated :10/10/2012

Version : 7.1.006



Content

1. Installation	3
1.1 Windows Platfom.....	3
1.2 Linux Platfom	3
2. System Management	4
3. Subscriber Management	5
4. Middleware	6
5. Streaming Player.....	7
5.1 HTTP Streaming	7
5.2 RTSP Streaming	7
6. Re-Stream and Record Video	8
6.1 Satellite TV Re-Stream	8
6.2 HTTP Re-Stream with authorization	8
7. Encoder or IP Streamer with Recording Video	9
8. Authenitication.....	10
8.1 Web Page Authentication	10
8.2 URL Authentication	12
9. System Log	13
10. Linux Background Execution	13



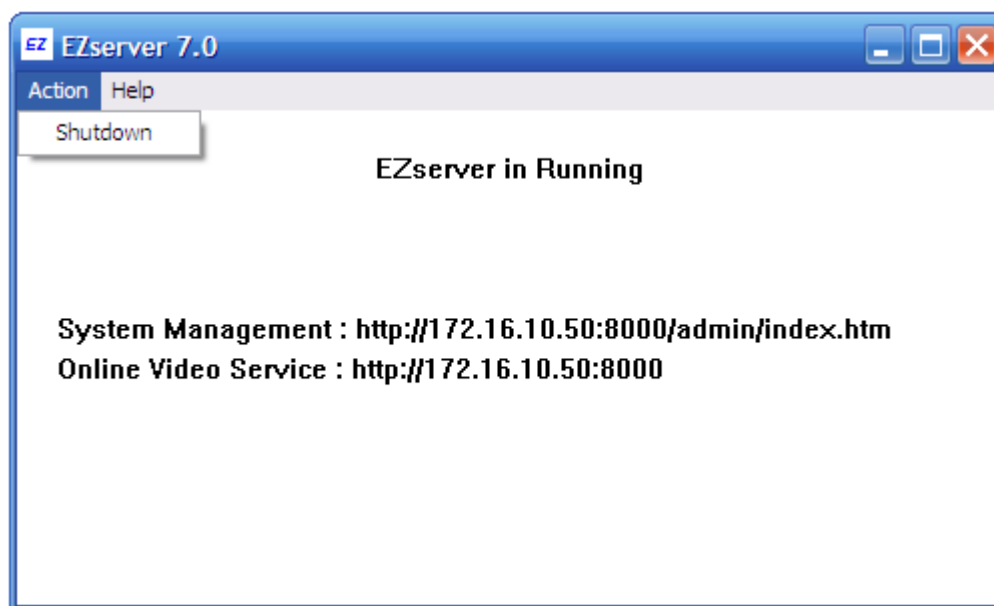
1. Installation

1.1 Windows Platform

Ezserver7.x.xxx_win.zip contains a folder “ezhometech” that includes “ezserver7.x.xxx” folder for windows server side and ezesrver_quick_guide.pdf.

- enter ezhometech/ezserver7.x.xxx folder
- double click ezserver.exe

You will see as below that ezserver is running on IP: 172.16.10.50, port: 8000.



1.2 Linux Platform

Ezserver7.x.xxx_linux.zip contains a folder “ezhometech” that includes ezserver7.x.xxx.tar for Linux server side and ezesrver_quick_guide.pdf.

On Linux Server console, input the below commmands:

- tar xfvz ezserver7.x.xxx.tar /*xxx: release version*/
- cd ezserver
- ./ezserver

You will see as below that ezserver is running on IP: 172.16.10.51, port: 8000.

And you can Ctrl key with C key to shutdown EZserver.

```
System Message [00012]: HTTP Server Starting
System Message [00013]: Movie_Fee_Refresh_Process wake_up ...
System Message [00014]: VOD RTP UDP Server Starting
System Message [00015]: RTSP Server Starting
System Message [00016]: VOD_Monitor_Server Starting
System Message [00017]: Player Management Server Starting
System Message [00018]: RTSP_Monitor_Server Starting
EZserver Message [00003]: System Management : http://172.16.10.51:8000/admin/index.htm
EZserver Message [00004]: Online Video Service : http://172.16.10.51:8000
EZserver Message [00005]: EZserver is running...
EZserver Message [00006]: Press Ctrl+C to quit Ezserver
System Message [00019]: Channel Log Opened....
```



2. System Management

If you want to enter EZserver System Managementcan, please use Internet browser to enter EZserver System Management by the URL path , e.g.

"http://172.16.10.50:8000/**admin**/index.htm". The default user id is "root" and password is "1234".



The login interface features the EZ logo and 'EZhometech' text at the top. Below is the 'EZserver' title. A login form contains a 'User ID' field with 'root' entered, a 'Password' field, and an 'OK' button. At the bottom, it says 'EZhometech Copyright'.

After login, you will see 4 icons for Setting and Managemnets as below:



The main menu displays the EZ logo, 'EZhometech', and a 'Logout' link. Below the 'EZserver' title are four blue buttons: 'System Setting', 'Channel Management', 'Player Management', and 'Ratings Points'. At the bottom is a link for 'Shutdown EZserver'.



3. Subscriber Management

If you want to enter Subscriber Management, please use Internet browser to enter Subscriber Management by the URL path , e.g. "http://172.16.10.50:8000/**subscr**/index.htm". The default user id is "root" and password is "1234".



EZhometech

Subscriber Management

User ID :

Password:

EZhometech Copyright



EZhometech [Logout](#)

Subscriber Management

Total User No.: 3 [Add User](#)

User no	User Name	Password	IPTV Expired Time	Pay Per View	Points	
1	root	1234	12/31/2012	one	166876	Save Del
2	ezhometech	1234	12/31/2012	one	0	Save Del
3	root	1234	12/31/2012	one	10000	Save Del

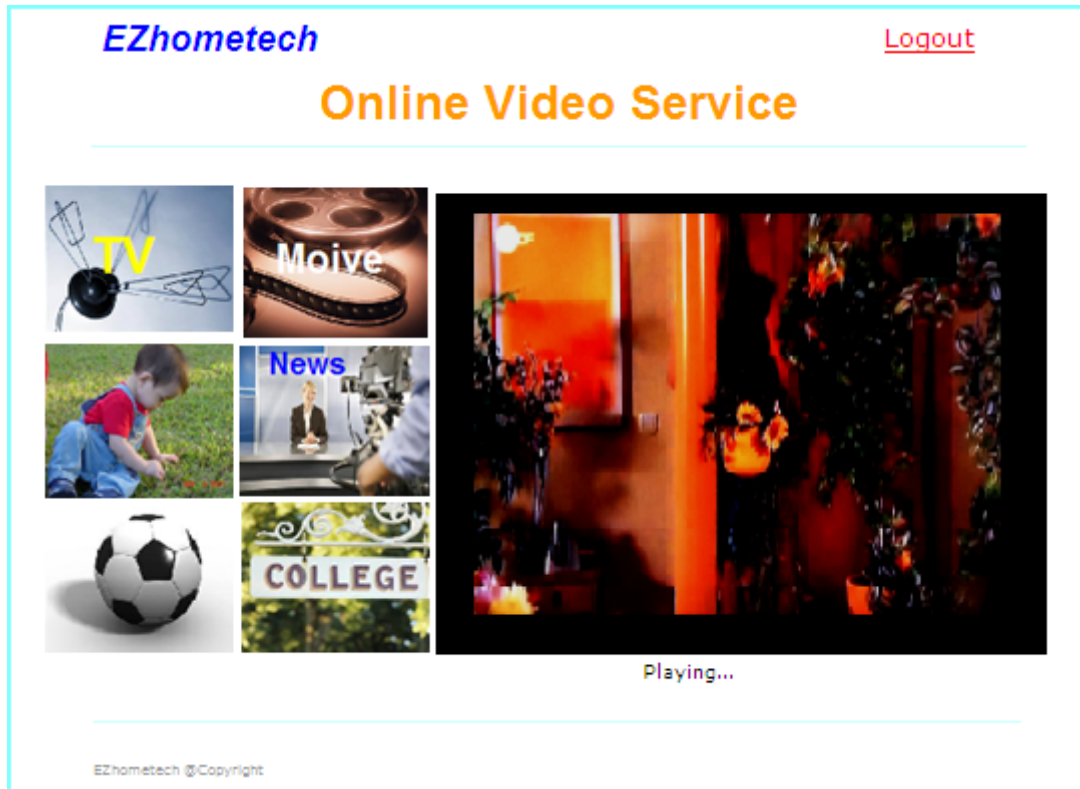
EZhometech Copyright



www.ezhometech.com
13F-1, No.189, Sec.2, Keelung Road, Taipei, Taiwan, R.O.C.
Tel: 886-2-27354224 Fax: 886-2-27354224

4. Middleware

You can surf video online service via Middleware, please use Internet browser (IE only) to enter Middleware by the URL path , e.g. "http://172.16.10.50:8000". The default user id is "root" and password is "1234".



For iPad, iPhone and HTML5 Device, you need to change the ip of all m3u8 files in the ezserver/media/videos/m3u8 folder as below:

#EXTINF:10, ez1

<http://ezserverip:8000/1.ch?u=root&p=1234>

#EXT-X-ENDLIST



5. Streaming Player

5.1 HTTP Streaming

If you have a media player such as *vlc player*, *ffplayer* or *Microsoft media player* with *M2T codec (K-Lite Codec Pack)*, you can input the below URL to test channel 1 for broadcast and 1.ts for VOD functions:

- <http://172.16.10.50:8000/1.ch>
- <http://172.16.10.50:8000/media/videos/Movie/1.ts>

5.2 RTSP Streaming

If you have a media player such as *vlc player* or *ffplayer*, etc., you can input the below URL to test channel 1 for broadcast and 1.ts for VOD functions:

- <rtsp://172.16.10.50:5544/1.ch>
- <rtsp://172.16.10.50:5544/media/videos/Movie/1.ts>



6. Re-Stream and Record Video

6.1 Satellite TV Re-Stream

If you have a Dreambox or simliar device (e.g. IP 192.168.10.2), Use a PC media player to watch a satellite program from it. (e.g.

<http://192.168.10.2:8001/1:0:1:76C0:40E:1:C00000:0:0:0>) and Go to EZserver Channel Management as below:

Channel	Channel Name	Media Source	Recorded Folder	Save	Del	Watch (IE only)
1	Movie	http://192.168.10.2:8001/1:0:1:76C0:40E:1:C00000:0:0:0	Movie	Save	Del	Watch (IE only)
2	Kids	http://192.168.10.2:8001/1:0:2:76C0:40E:1:C00000:0:0:0	Kids	Save	Del	Watch (IE only)
3	Sports	http://192.168.10.2:8001/1:0:3:76C0:40E:1:C00000:0:0:0	Sports	Save	Del	Watch (IE only)
4	News	http://192.168.10.2:8001/1:0:4:76C0:40E:1:C00000:0:0:0	News	Save	Del	Watch (IE only)
5	Education	http://192.168.10.2:8001/1:0:5:76C0:40E:1:C00000:0:0:0	Education	Save	Del	Watch (IE only)

EZhometech Copyright

- Modify **channel 1 media source** to **<http://192.168.10.2:8001/1:0:1:76C0:40E:1:C00000:0:0:0>**
- Channel1 stream is recorded to tv_program_archive/Movie folder (default pre-path: **tv_program_archive**)

6.2 HTTP Re-Stream with authorization

If you need to add user id and password into the Media source of each channel, the syntax is as **<http://userid:password/ip:port/stream>**,
ex. <http://root:1234@172.16.10.51:8000/1.ch>



7. Encoder or IP Streamer with Recording Video

If you have a Encoder or streamer supporting multicast, Set the video output of your device to udp://224.1.1.1:9001 and Go to EZserver Channel Management as below:

Channel Management

Total Channel No.: 5 [Add Channel](#)

Channel	Channel Name	Media Source	Recorded Folder	Save	Del	Watch (IE only)
1	Movie	udp://224.1.1.1:9001	Movie	Save	Del	Watch (IE only)
2	Kids	udp://224.1.1.2:9001	Kids	Save	Del	Watch (IE only)
3	Sports	udp://224.1.1.3:9001	Sports	Save	Del	Watch (IE only)
4	News	udp://224.1.1.4:9001	News	Save	Del	Watch (IE only)
5	Education	udp://224.1.1.5:9001	Education	Save	Del	Watch (IE only)

EZhometech Copyright

- Modify **channel 1 media source** to udp://224.1.1.1:9001
- Channel1 stream is recorded to tv_program_archive/Movie folder (default pre-path: **tv_program_archive**)



8. Authentication

There are two ways for the authentication with EZserver, one is add login/logout script into a web page or add user id and password after the URL link.

8.1 Web Page Authentication

Add Login Script and Logout Script into a Web page before the player plays video from Ezsrever.

Loign Script

```
var xmlhttp = new XMLHttpRequest();
var g_token=0;
var g_user_id;
var g_password;
function login_return() {
    if (xmlhttp.readyState == 4)
    {
        var response = xmlhttp.responseText;
        if (response=="-1")
        {
            alert("Connection Timeout");
        } else if (response=="0")
        {
            alert("Non Root User or Wrong Password");
        } else if (response>0)
        {
            g_token=response;
            alert("Login Sucessfully");
        }
    }
}
function login(){
    var cgi_url;
    g_user_id = document.getElementById("user_id").value;
    g_password = document.getElementById("password").value;
    cgi_url = "/cgi-bin/cgi_ezserver?user_id="+escape(g_user_id)+ "&password=" +
    escape(g_password)+"&flag="+Math.random();
    xmlhttp.open("GET", cgi_url, true);
    xmlhttp.onreadystatechange = login_return;
```



```
xmlHttp.send(null);  
}
```

Logout Script

```
function login_out_return() {  
    if (xmlHttp.readyState == 4)  
    {  
        var response = xmlHttp.responseText;  
        alert("Logout Sucessfully");  
    }  
}  
function logout()  
{  
var cgi_url;  
cgi_url = "/cgi-bin/cgi_ezserver?token="+escape(g_token)+"&user_id="+escape(g_user_id)+  
"&password=" + escape(g_password)+"&flag="+Math.random();  
    xmlHttp.open("GET", cgi_url, true);  
    xmlHttp.onreadystatechange = login_out_return;  
    xmlHttp.send(null);  
}  
}
```



8.2 URL Authentication

It needs to set **user_authorization=1** in ezserver_config.txt. And There are 3 ways for subscriber authorization for http video streaming and 2 ways for rtsp video streaming as below

- “**?u=userid:p=password**” after URL link
- “**?u=userid&p=password**” after URL link
- “**userid:password@**” before URL link

Examples:

HTTP Video Streaming

- http://**172.16.10.50**:8000/1.ch?**u=root:p=1234**
- http://**172.16.10.50**:8000/1.ch?**u=root&p=1234**
- http://root:1234@**172.16.10.50**:8000/1.ch
- http://**172.16.10.50**:8000/media/videos/Movie/1.ts?**u=root:p=1234**

RTSP Video Streaming

- rtsp://**172.16.10.50**:5544/1.ch?**u=root:p=1234**
- rtsp://**172.16.10.50**:5544/media/videos/Movie/1.ts?**u=root:p=1234**



9. System Log

- **for 7.1.xxx above**
- Replace "system_log=0" by "**system_log=1**" in ezserver_config.txt.
- Restart EZserver, then It will create a system log file, called "**system.log**" in ezserver folder.
- Shutdown EZserver by EZserver System Management to get the whole log information

10. Linux Background Execution

- **".ezserver &"** in Linux console.
- **"nohup .ezserver &"** in Linux console.

More Detial for User Guide is at

EZserver: http://www.ezhometech.com/developer/ezserver_installation/user_manual.htm