

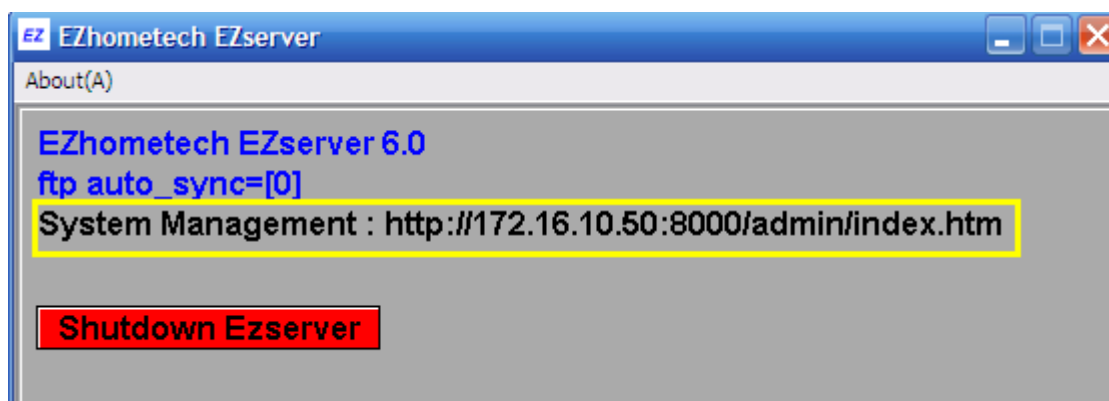


EZserver Quick Installation Guide for Windows Platform

ezserver6_win.zip contains a folder “ezhometech” that has two folders, one is “ezserver6.x.xxx” folder for server side, the other is “emlware” folder for client side on PC x86 windows platform.

1. enter ezhometech/ezserver6.x.xxx folder
2. double click ezserver.exe

You will see as below that ezserver is running on IP: 172.16.10.50, port: 8000. And you can click the red button to shutdown EZserver.



If you want to enter EZserver System Management, please use Internet browser to enter EZserver System Management by the URL path , e.g.
“http://172.16.10.50:8000/admin/index.htm”. The default user id is “root” and password is “1234”.



EZserver

System Management

User ID :

Password:



After login, you will see 6 icons for Setting and Managemnets as below:



3. enter ezhometech/emlware folder

4. double click ezmlware.exe

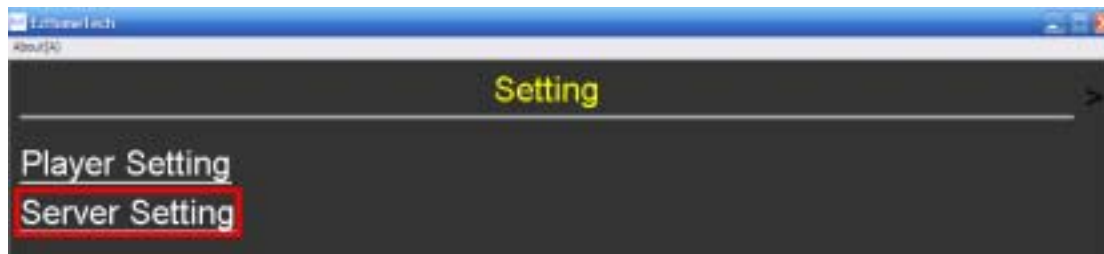
Because emlware does not set correct EML URL for Top Menu that is defined by xml language now, you will see the below screen.



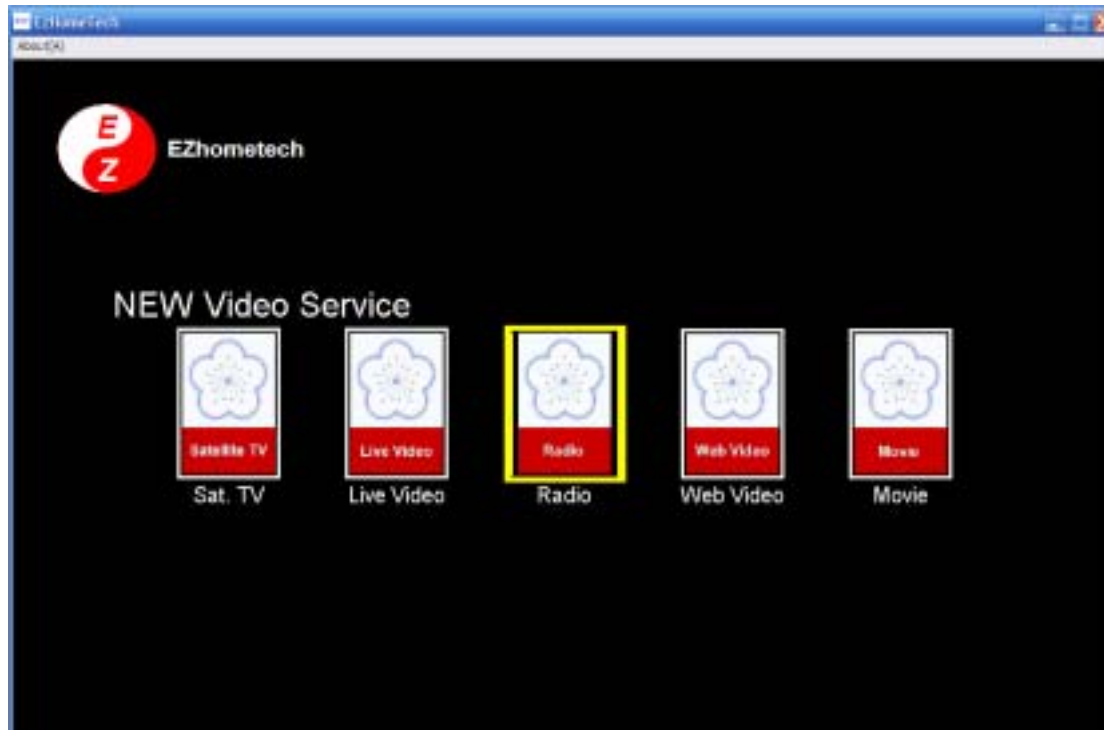


www.ezhometech.com
13F-1, No.189, Sec.2, Keelung Road, Taipei, Taiwan, R.O.C.
Tel: 886-2-27354224 Fax: 886-2-27354224

You just click any key or mouse button to enter the emlware setting menu and select Server Setting to input EML URL that is EZserver eml folder and EZserver IP for the player management and press "Save" button.



Then emlware will connect EZserver and show the Top menu of emlware as below:



More Detail for Manual is at

EZserver: http://www.ezhometech.com/developer/ezserver_installation/user_manual.htm

EMLware: http://www.ezhometech.com/developer/emlware/user_manual.htm